

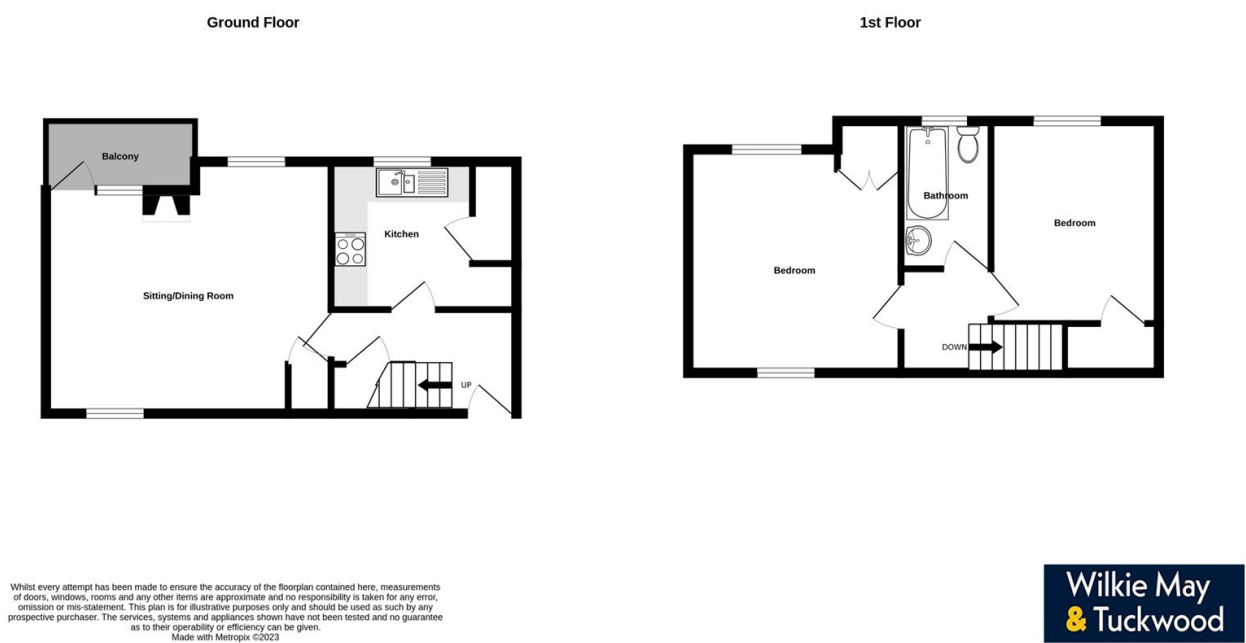
Tenure: The property is offered for sale leasehold by private treaty with vacant possession on completion.

A photograph of a bathroom interior. On the left, a white pedestal sink is mounted on a white wall. Below the sink, a white toilet is visible. To the right of the toilet, a window with a red curtain is set into a wall covered in light-colored tiles. A white shower curtain hangs from a metal rod in the foreground. The floor is white.



**Wilkie May
& Tuckwood**

Floor Plan



SECOND FLOOR: SITTING/DINING ROOM: 16'3" x 13'1" (4.95m x 3.98m), KITCHEN: 7'11" x 8'0" (2.41m x 2.43m), BEDROOM ONE: 11'9" x 12'10" (3.58m x 3.91m), BEDROOM TWO: 11'3" x 9'6" (3.42m x 2.89m), BATHROOM: 5'1" x 8'2" (1.54m x 2.48m)



Description

A two bedroom second floor maisonette apartment offering spacious accommodation served by double glazing and gas fired central heating.

The property, which would make an ideal First Time Buyer or investment purchase, offers accommodation arranged over two floors and is offered to the market with no onward chain.

- Maisonette
- Two Bedrooms
- Gas Fired Central Heating
- Double Glazing
- On Street Parking
- No Onward Chain
- An Ideal First Time Buyer Or Investment Purchase



Internally, a front door leads into entrance hall with fitted kitchen off. The kitchen comprises of a matching range of wall and base units, roll edge work surfaces, integrated double oven with space for tumble dryer as well as space and plumbing for a washing machine and dishwasher.

From the entrance hall, there is a doorway through to a good size sitting room offering dual aspect windows ensuring a light and airy space with gas coal-effect fire, an attractive Portuguese marble hearth and surround and doors out to a small balcony. To the first floor are two generous size bedrooms (one of which houses the new boiler that was installed in 2018) and a family bathroom.

